

A UNIFIED CONFIGURATION FOR ALL UIs



EASY CONFIGURATION FOR COMPLEX NEEDS !

A unified configuration for all UIs

These new UIs leverage the power of our configuration layer.

Business rules are set up only once in D2-Config, no migration is then needed to switch from one interface to another.



X3, a widget-based, browser agnostic portal

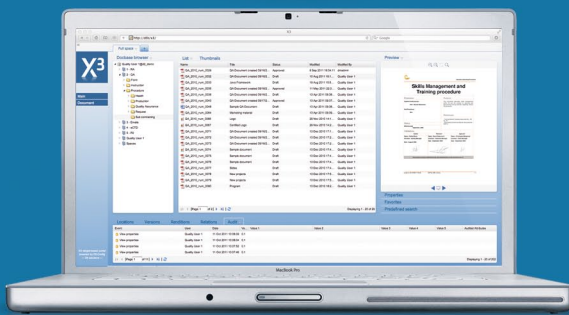
X3 allows you to use pre-defined workspaces or to create your own by deploying widgets. Two types of widgets are actually available:

- > Functional widgets provided by C6 like Docbase browser, properties dialog, list of documents, etc.
- > External widgets like Google gadgets (Google Map, Google Weather, calculator, calendar, etc) and intranet or web sites.

At any time you can switch two widgets by a simple drag and drop or replace a widget by another one to modify your space. Once your spaces are defined, simply log out and they will be re-opened at the next login.

Workspaces are configurable through D2-config. You can pre-define the content, for a specific project for example, and the skins (color schemes) by user or group of users. These workspaces are still modifiable by the users.

A communication channel makes it possible to exchange messages between widgets.



iD2, a real iPad application

Our iPad application, as with all our UIs, uses the configuration of your business rules in our configuration engine.

Stay connected everywhere with our iPad app. to:

- > Browse Docbases
- > Search your documents
- > View documents and properties

Manage your tasks from your iPad:

- > Browse your workflow tasks
- > Read messages and view documents
- > Accept or reject simple tasks like "Read and Understood"

Just download iD2 and play. No migration is needed to switch to this interface, and thanks to the simplicity of our application no training is necessary.

